

COLOGISTICS

Shirin Mahdavi

INTERPORTO DI TRIESTE



Location at the border



- Close to the Italian-Slovenian border
- Along Adriatic-Baltic and the Mediterranean European Corridors
- Operating since 30 years in the international exchange of goods



Connections



Direct connections

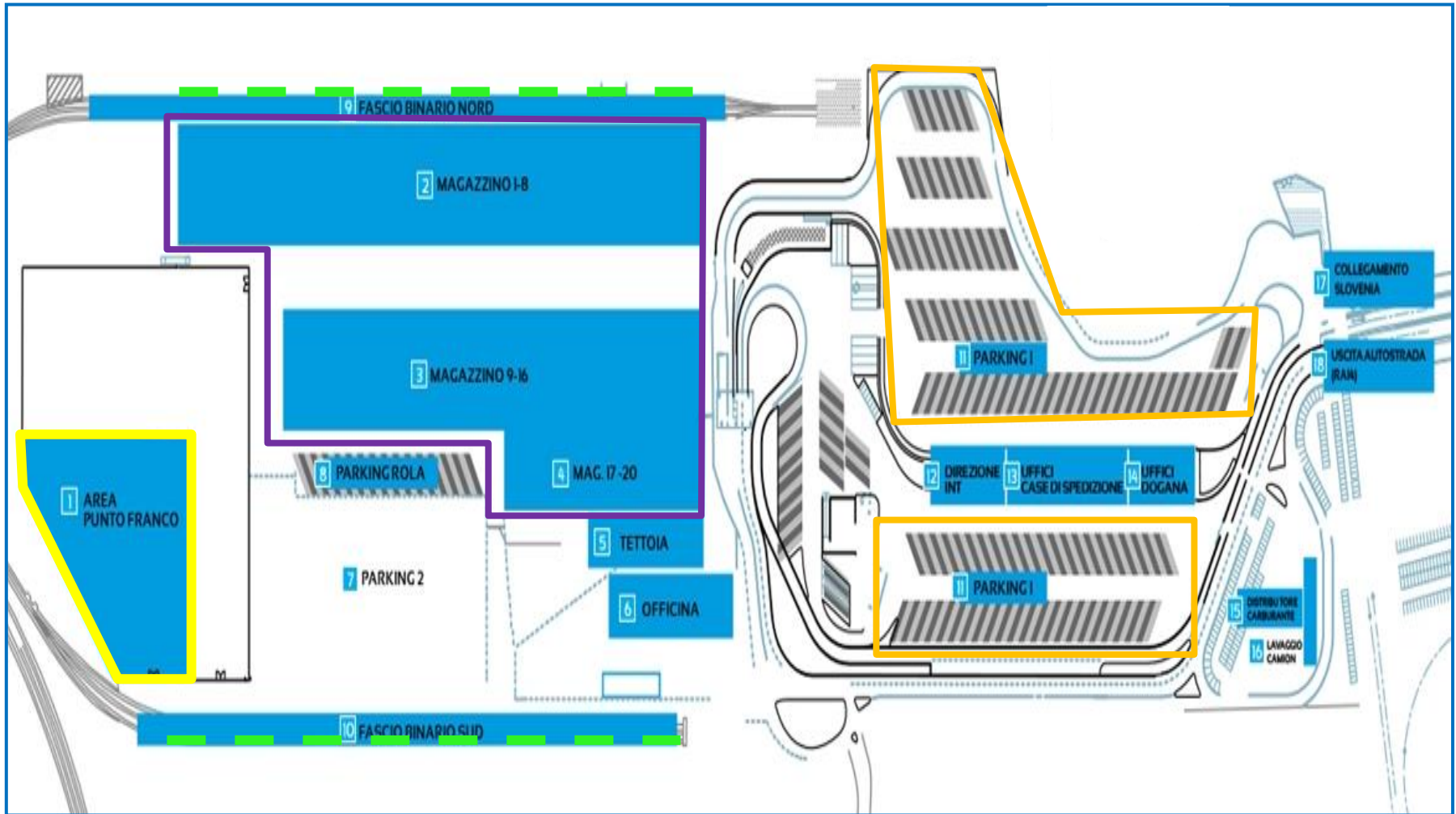
- Italian and Slovenian railway
- Italian and Slovenian highway

Distance:

- ✓ 18 km from Trieste Port
- ✓ 30 km from Monfalcone Port
- ✓ 35 km from Koper Port



Our Area



 Free Zone Area

 Parking Area

 Railway tracks

 Warehouses



Our Services



Parking area



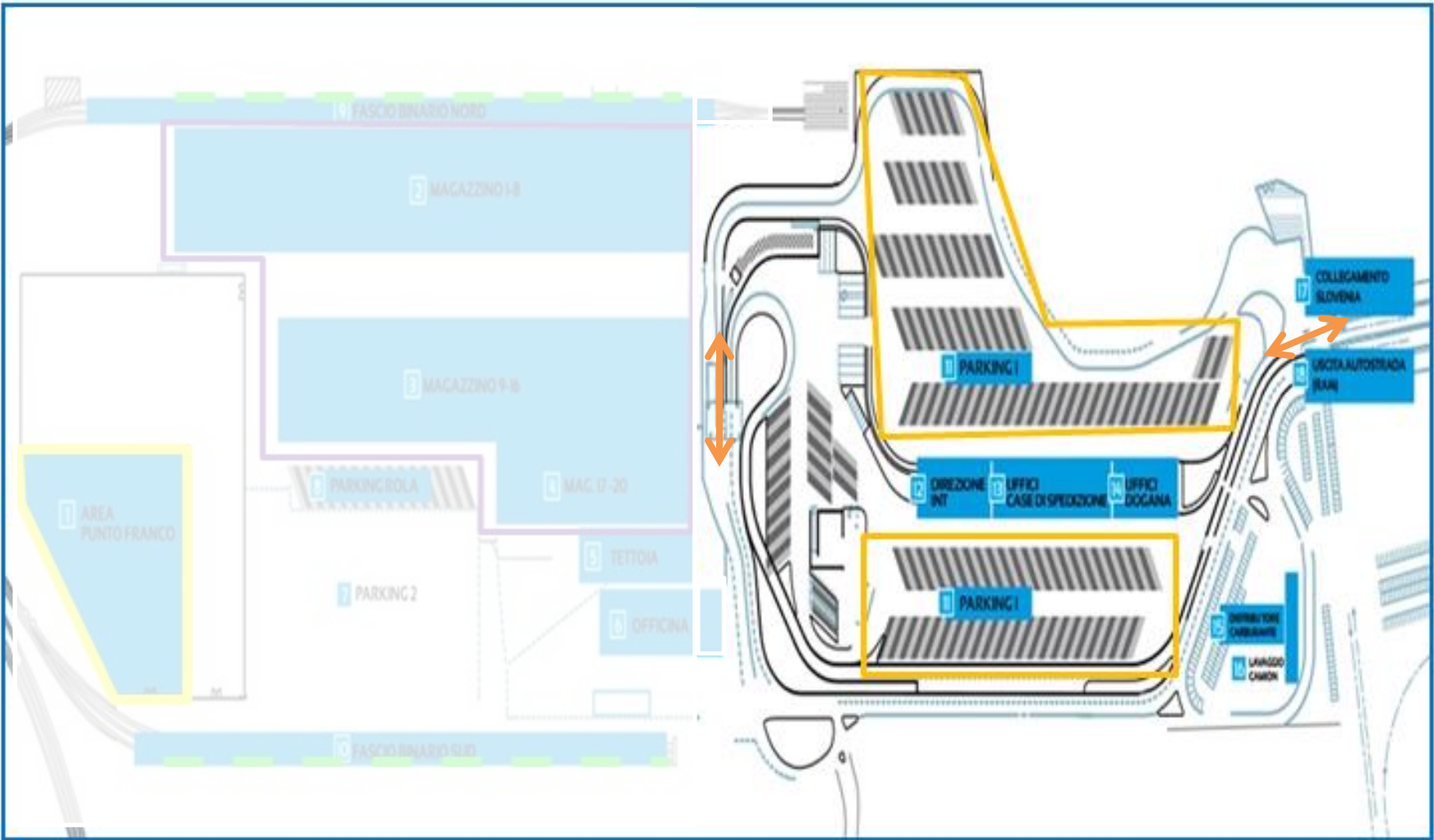
Warehouses



Train services



Parking service



Parking service

- Direct connection to Italian and Slovenian highway
- Huge parking area

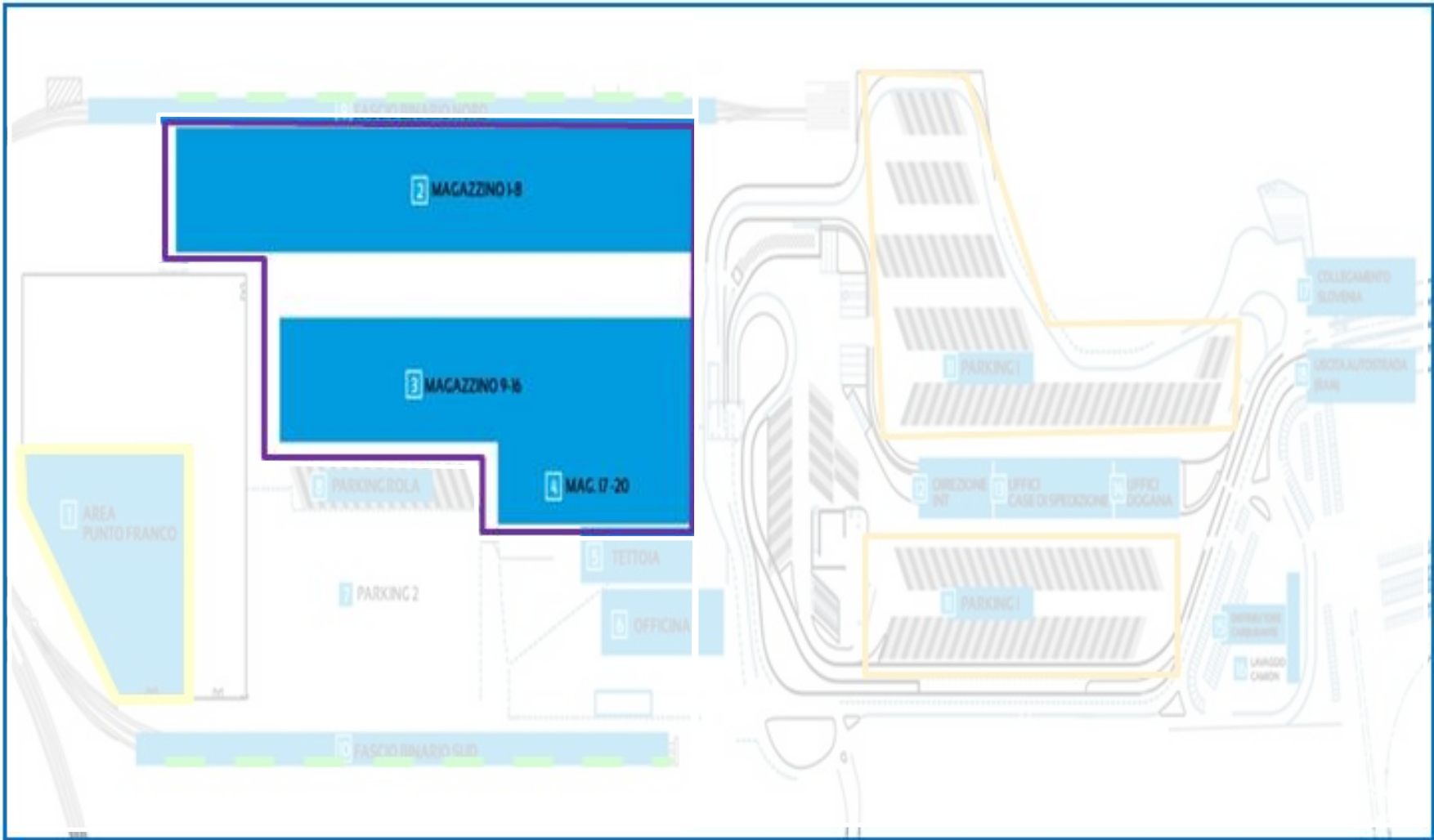
Services to the drivers:

restaurant, internet point, bazar shop, ATM, fuel station, truck maintenance, tyres repair, truck washing

n. Trucks 2016: more than 140,000



Warehouses



Warehouses

Interporto di Trieste offers 130,000 sqm of open space, 33,000 sqm of covered warehouses and 3,000 sqm of roofed area.

Our services:

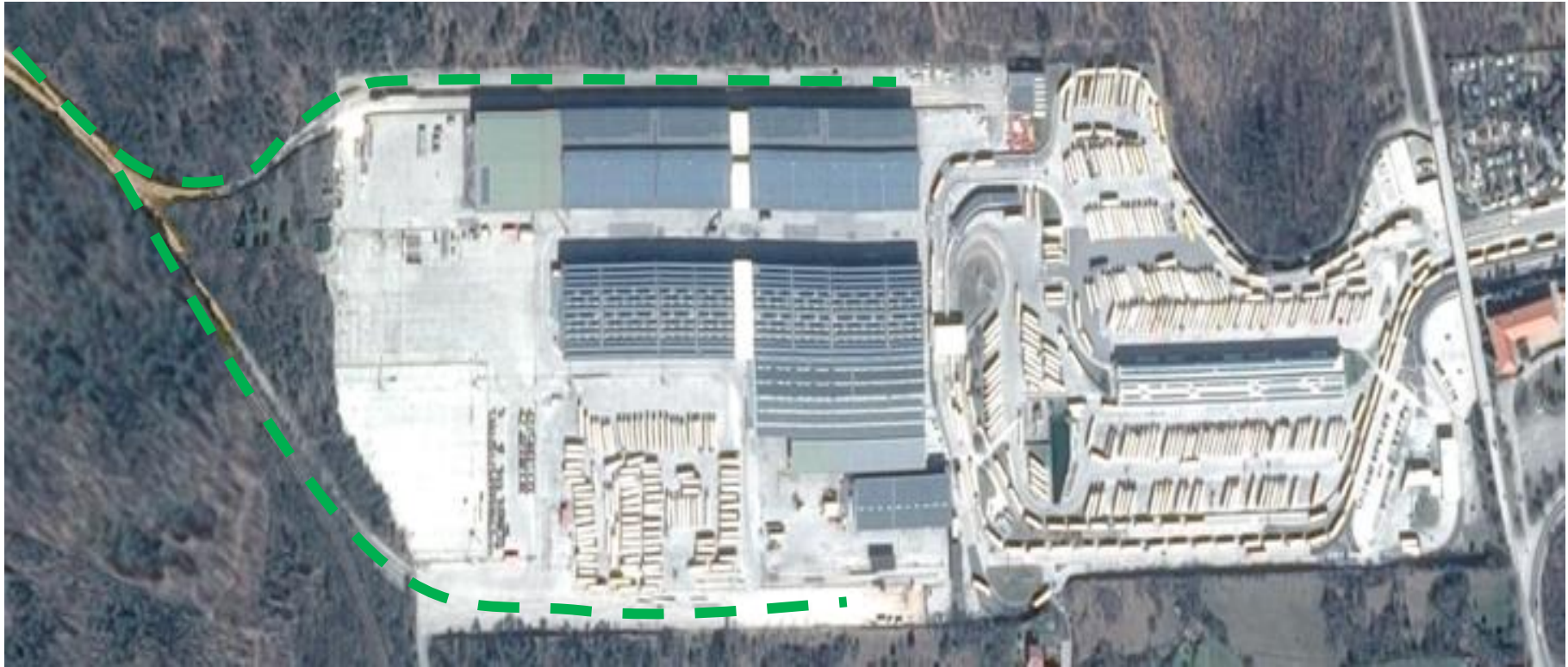
- ✓ warehouses: national, bonded, ADR, food and beverage, VAT
- ✓ consolidation and deconsolidation groupage
- ✓ handling container, swap body, megatrailer, heavy lift
- ✓ high level security 24h/24h

	container			
	cont.	in	out	ton
Tot 2016	1,073	921	152	18,849
1st Q 2016	344	255	89	6,477
1st Q 2017	811	725	86	15,845
Var. % 1st Q	+136%	+184%	-3%	+145%

	ton by truck		
	in	out	ton
Tot 2016	22,726	52,445	75,171
1st Q 2016	5,539	14,528	20,067
1st Q 2017	6,767	18,658	25,425
Var. % 1st Q	22%	28%	27%



Our railway line



Connections:

- private railway
- connection to international railway
- North railway line: 3 tracks
- South railway line: 3 tracks

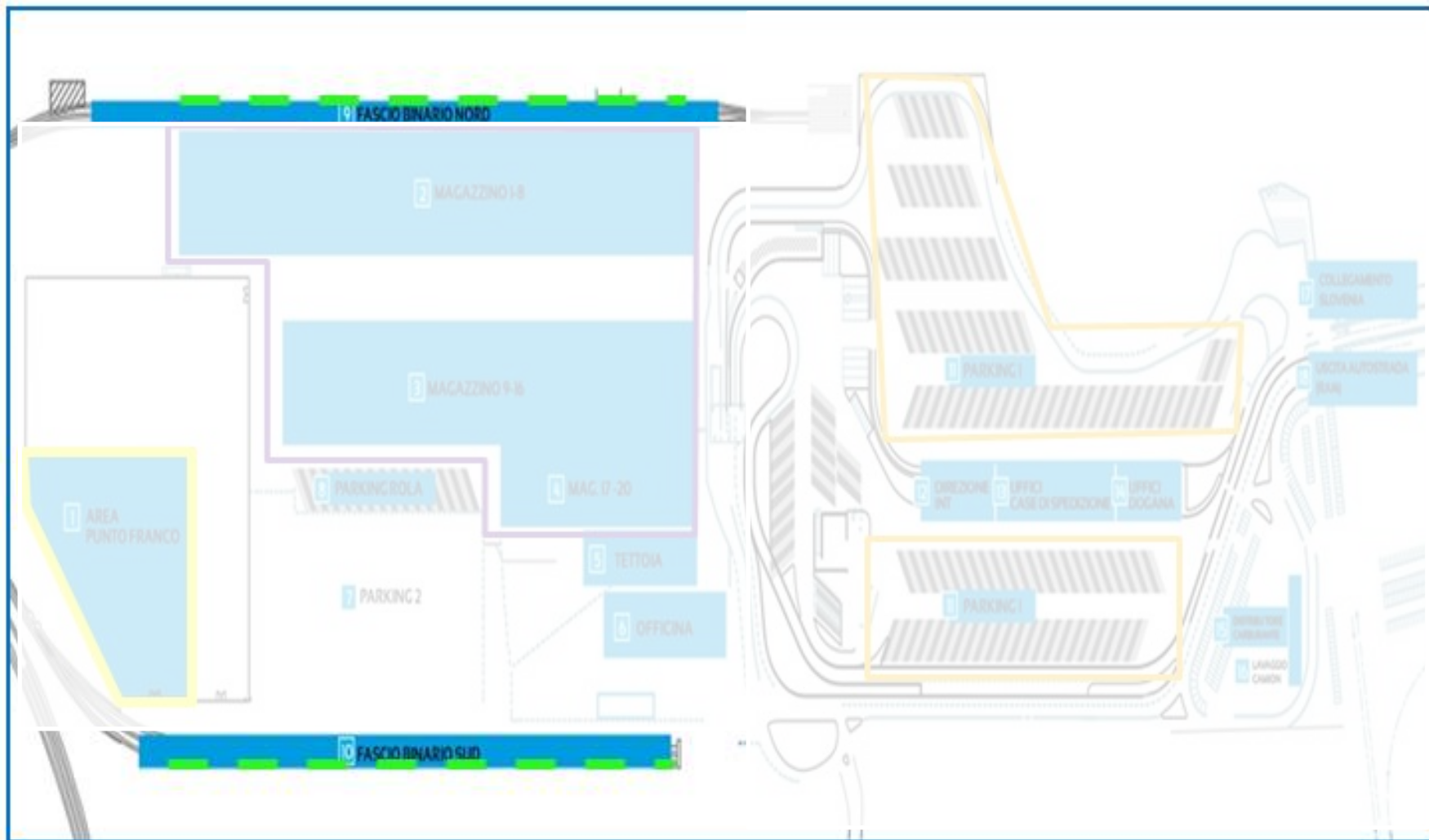
	2016	
	<i>train in</i>	<i>train out</i>
RoLa services	329	329
Other services	35	29
Total	364	358

Our train services:

- RO-LA services from/to Salzburg
- receiving/sending general cargo or intermodal trains
from/to European Countries
- “shuttle” service from/to Port of Trieste



Train services



Free Zone in Interporto di Trieste

- 10,000 sqm Free Zone in our area
- Interporto Free Zone connected with Trieste Free Port through a “Corridor”
- “Shuttle” trains from the Port and Interporto and viceversa
- Possibility for the Transport Companies to exchange the trailers in the Interporto di Trieste as well as in the Free Port of Trieste for import and export operations



Future developments

- Warehouses in Free Port of Trieste
- Warehouses in the Industrial Zone located between Trieste Port and Interporto
- Development of our role of inland terminal of Trieste Port



CO-GISTICS Project and Interporto

Intelligent Truck Parking

Speed Advice

Cargo Truck Optimization



CO-GISTICS Project – Intelligent Truck Parking

Objectives

- possibility to pay directly by the app on mobile
- possibility to reduce timing and queue

Applicability in Interporto

- difficulty to have many users
- other kinds of payment already available



CO-GISTICS Project – Intelligent Truck Parking



CO-GISTICS Project – Intelligent Truck Parking



Actual Situation

- trucks arriving in Interporto and waiting for “green light” to the access to Port of Trieste
- trucks stop in Interporto if “red light”
- queue at the gates of Interporto and the Port and in the highway connection

Objectives

- authorized trucks can go directly to the Port without passing through Interporto
- reduction of queue in our area and at the gates



CO-GISTICS Project – Speed Advice

Actual situation

- queue at the gate in Interporto
- congestion of our terminal

Objectives

- inform the drivers of traffic situation
- planning drivers' travel to Interporto
- reduction of queue and congestion in our area



The background is a monochromatic blue gradient with various geometric shapes and patterns. On the left, a stylized crane is depicted with a horizontal beam supported by several vertical cables. To the right, there are abstract, blocky shapes that resemble industrial structures or buildings. The overall aesthetic is clean and modern.

THANK YOU!

Shirin Mahdavi
mahdavi@inteportotrieste.it